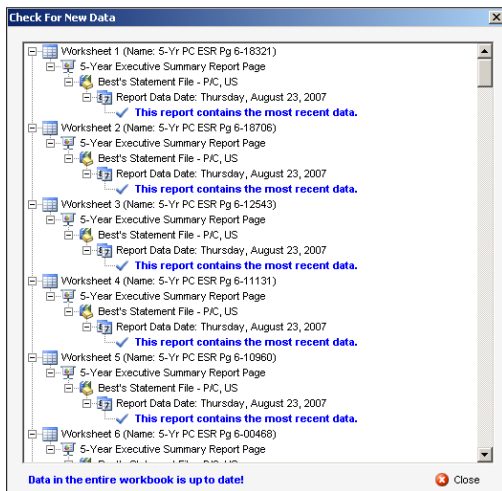


The Award-Winning *BestLink*[®] for Excel[®] Brings You Real-Time Financial Data Online — and on Demand

Current *A.M. Best Insurance Industry Financial Suite* customers (see product list below):
Visit <http://support.ambest.com/bestlinkexcel> to download *BestLink for Excel*.

As part of our overall mission to develop navigation tools for business, A.M. Best is using the latest technology to provide access to the most recent financial and rating information, all from inside Microsoft Excel. Excel has been requested as a data access point by the vast majority of our subscribers. *BestLink for Excel*, powered by A.M. Best's **Global Insurance & Banking Database**, takes advantage of this familiar platform to provide greater flexibility and value to users of *Best's Statement File* and other products from *A.M. Best's Insurance Industry Financial Suite*.

For those looking for quick and easy access to the latest A.M. Best data, we've included a series of **Wizards** and **Quick Reports** that quickly enable you to download professional data presentations covering items such as Company Profile, Ratings Profile, Executive Summary Reports, Statement Pages and more.



We're also making it easier to include the latest financial and rating information A.M. Best has to offer. We've added a feature that scans your workbooks for the presence of A.M. Best data references and generates a report that lets you know whether your data is up-to-date. If it isn't, simply refresh your worksheets from our online data repository.

For the more experienced Excel user, we provide direct access to every field from nearly all of the databases in *A.M. Best's Insurance Industry Financial Suite* (see the list below). With our **Custom Report** option, you select the companies, data fields, years (up to 11), and in some cases the states and lines of business required for your research.

If you're not sure what companies you're looking for, our **Advanced Query** dialogue provides you with the tools to query our database to locate insurers based on a wide range of criteria—including an easy way to locate the top insurers for any financial data field.

BestLink for Excel lets you integrate the latest online data and Best's Ratings from the following products (data access is limited to the products purchased and registered):

- *Best's Statement File – U.S. (Property/Casualty, Life/Health and Health, including Separate Accounts)*
- *Best's State/Line (Property/Casualty Lines, Life Lines, A&H Lines and Health Lines)*
- *Best's Insurance Expense Exhibit*
- *Best's Schedule P*
- *Best's Schedule F*
- *Best's Schedule S*
- *Best's Schedule D*
- *Best's Statement File – Global (includes Global data fields only)*
- *Best's Statement File – Canada (Property/Casualty and Life/Health)*
- *Best's GAAP, U.S.*

Features Include:

- **Direct Online Access:** Connect via Excel to ratings, financial data and reports.
- **Reports:** Create reports based on your parameters, or choose from several standard reports: *Best's Executive Summary Reports*, *Best's Market Share Reports*, *Best's Company Profile Reports* and more. There are even Comparison and Composite Reports to benchmark an insurer's performance against that of other companies or a peer group composite.
- **Statement Pages:** Generate any combination of companies, years and pages in Excel format. All U.S. data is presented in NAIC statement format covering the past three years of returns. Canadian data is in OSFI format.
- **Currency Converter:** View data in the currency of your choice using current and historical exchange rates (*Best's Statement File – Global* only).



For Product Information:

For Technical Support:

U.S., Canada, Bermuda, Caribbean: +1 (908) 439-2200, ext. 5311; sales@ambest.com
Europe, Africa, Asia, Australia: +44 (0) 20 7626 6264; europe.sales@ambest.com

U.S., Canada, Bermuda, Caribbean: +1 (908) 439-2200, ext. 2621; technical_support@ambest.com
Europe, Africa, Asia, Australia: +44 (0) 20 7397 0272; europe.support@ambest.com