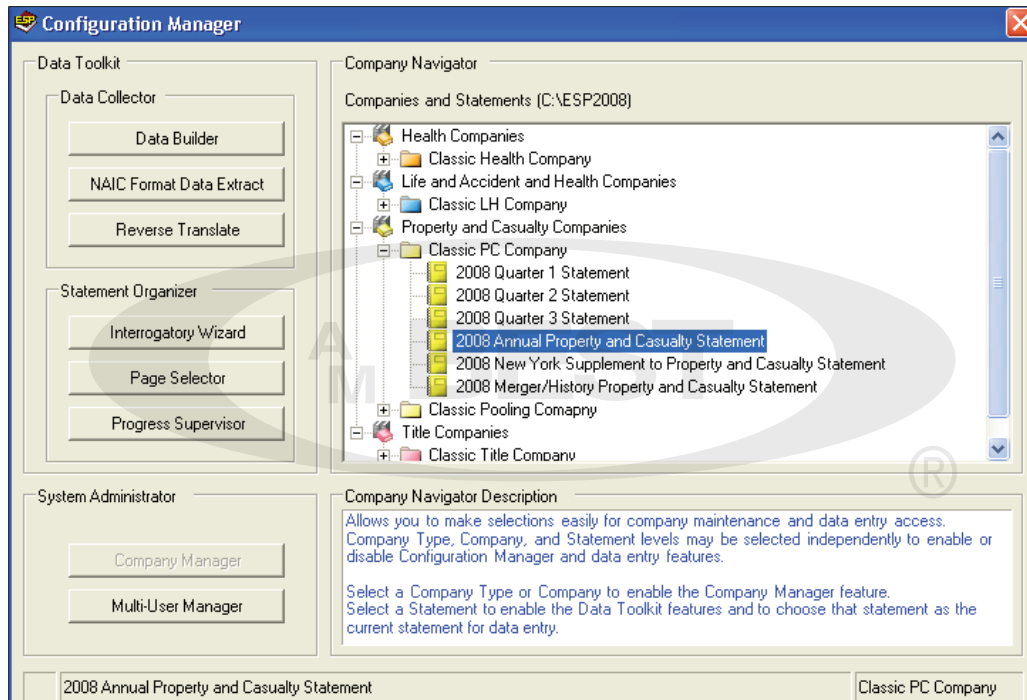


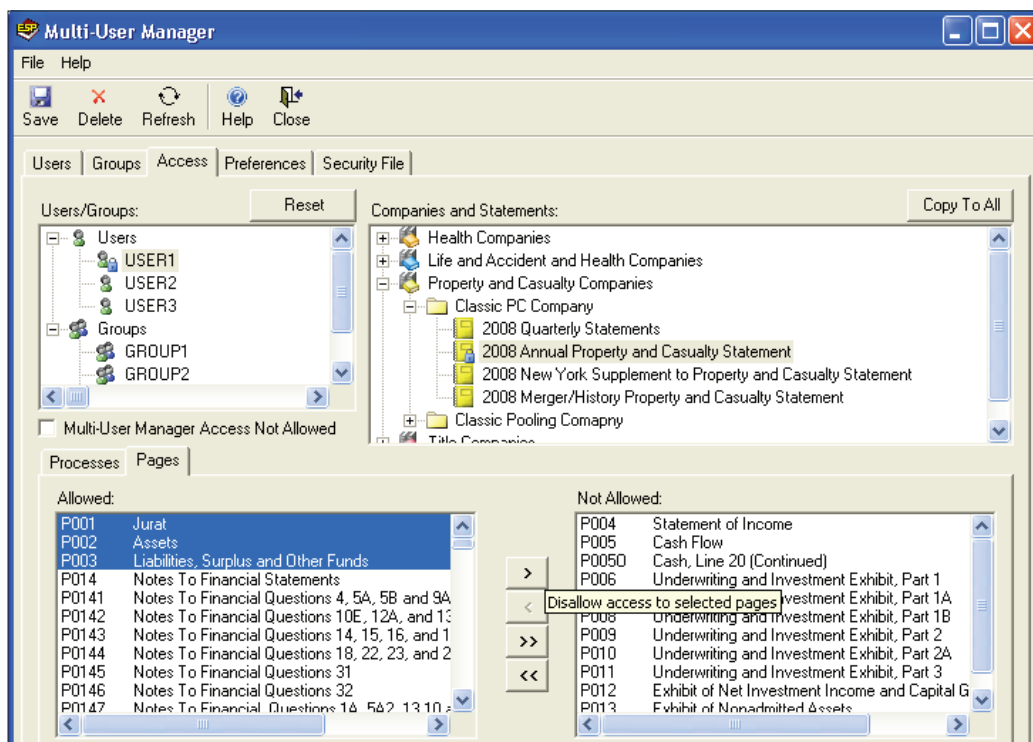
# Sample: BestESP Services – US

*BestESP Services - US* (patent pending) is a Microsoft Windows-based software package that enables you to prepare, print and file quarterly and annual statements that comply with all NAIC and New York state regulatory requirements. See below for samples of some of the software features and functions.

## Configuration Manager



## Multi-User Manager



## Data Builder

The screenshot shows the Data Builder application window. The title bar reads "Data Builder". The menu bar includes "File", "Edit", "View", and "Help". The toolbar contains icons for "Open", "Save", "To XLS", "Add", "Delete", "Cut", "Copy", "Paste", "In", "Out", "Reset", "Minus", "Parents", "Explore", "Help", and "Close".

The main area is divided into two panes. The left pane, titled "Available Pages", shows a tree structure under "Classic PC Company" and "2008 Annual Property and Casualty Statement". It includes "List Pages" and "Worksheet Pages" with numerous sub-items like "P002 - Assets", "P003 - Liabilities, Surplus and Other Funds", etc. The right pane, titled "Data Template", shows a table for "Liabilities, Surplus and Other Funds" with two columns, "Col1" and "Col2", and 24 rows numbered 01 to 24. The values in the table are as follows:

	Col1	Col2
01	1	2
02	3	4
03	5	6
04	7	8
05	9	10
06	11	12
07.1	13	14
07.2	15	16
08	17	18
09	19	20
10	21	22
11.1	23	24
11.2	25	26
12	27	28
13	29	30
14	31	32
15	33	34
16	35	36
17	37	38
18	39	40
19	41	42
20	43	44
21	45	46
22	47	48
23	10	54
24	586	654

## Relationship View

The screenshot shows the BestESP 2008.32 - 2008 Annual Property & Casualty application. The title bar reads "BestESP 2008.32 - 2008 Annual Property & Casualty". The menu bar includes "File", "View", "Pages", "Print", "Data", "Submission", "Company", and "Help". The toolbar contains icons for "Prefs", "Status", "Category", "Type", "Info", "Preview", "Refresh", "Manager", "Supp. Int.", "Collect", "Help", and "Exit".

The main area is divided into two panes. The left pane, titled "Statement Navigator (Data Entry Status View)", shows a tree structure for "2008 Annual P&C" with sub-items like "March Filing Period", "April Filing Period", "June Filing Period", and "Nonspecific Filing Period". The right pane, titled "Pages", shows a table with columns "Page #", "Description", "Relationship", "Has Data", and "Page Type".

A dialog box titled "Generate Schedule P Pooling Data" is open in the foreground. It has a list of pages with checkboxes and "Has Data" status. The data in the dialog is as follows:

Page #	Description	Has Data
<input checked="" type="checkbox"/>	047 Sch. P. Pt. 1A, Homeowners/Farmowners	
<input checked="" type="checkbox"/>	048 Sch. P. Pt. 1B, Private Passenger Auto Liability/Medical	
<input checked="" type="checkbox"/>	049 Sch. P. Pt. 1C, Commercial Auto/Truck Liability/Medical	
<input checked="" type="checkbox"/>	050 Sch. P. Pt. 1D, Workers' Compensation	
<input type="checkbox"/>	051 Sch. P. Pt. 1E, Commercial Multiple Peril	
<input type="checkbox"/>	052 Sch. P. Pt. 1F, Sn. 1, Medical Malpractice, Occurrence	
<input checked="" type="checkbox"/>	053 Sch. P. Pt. 1F, Sn. 2, Medical Malpractice, Claims Made	
<input checked="" type="checkbox"/>	054 Sch. P. Pt. 1G, Special Liability	
<input type="checkbox"/>	055 Sch. P. Pt. 1H, Sn. 1, Other Liability, Occurrence	
<input type="checkbox"/>	056 Sch. P. Pt. 1H, Sn. 2, Other Liability, Claims Made	
<input type="checkbox"/>	057 Sch. P. Pt. 1I, Special Property	
<input checked="" type="checkbox"/>	058 Sch. P. Pt. 1J, Auto Physical Damage	
<input checked="" type="checkbox"/>	059 Sch. P. Pt. 1K, Fidelity/Surety	

At the bottom of the dialog, there are buttons for "Previous", "Automark", "Run", "Close", and "Marked 8". Below the dialog, there is a text area with the following text:

The Statement Navigator is organized by status within filing period for the 2008 Annual P&C statement.

The Page List and Relationship tabs show all pages for the March filing period that are included for data entry based on selections you made with Data Entry Manager or Page Selector, your Supplemental Exhibits and Schedules Interrogatories responses, or because data must always be entered for these pages.

Below the text area, there is a table with the following data:

Data file name:	P001.PRN
Has data:	No
Data Entry Status:	Included For Data Entry
Back-year Data page(s):	P001
Has last quarter data:	No

## Schedule P Pooling Data

BestESP 2008.32 - 2008 Annual Property & Casualty - [Enter Schedule P Pooling Percentages \*]

File Edit Help

Save Info Prefs Print Preview Explore Cut Copy Paste Fill Col Fill Row Fill Rng Fill All Help Close

Aggregate Company  
Classic PC Company

Inter-Company Pooling Participation Percentages

Page	Schedule	1999	2000	2001	2002	2003	2004	2005	2006	2007	2008
P047	Sch. P, Pt. 1A, Homeowners/Farmowners	88.0	89.0	90.0	91.0	92.0	93.0	94.0	95.0	96.0	97.0
P048	Sch. P, Pt. 1B, Private Passenger Auto Liability/Medical	88.0	89.0	90.0	91.0	92.0	93.0	94.0	95.0	96.0	
P049	Sch. P, Pt. 1C, Commercial Auto/Truck Liability/Medical	88.0	89.0	90.0	91.0	92.0	93.0	94.0	95.0	96.0	
P050	Sch. P, Pt. 1D, Workers' Compensation	Enter values from 0 to 100. Leave blank (entry of zero) to prevent allocation.									
P051	Sch. P, Pt. 1E, Commercial Multiple Peril	88.0	89.0	90.0	91.0	92.0	93.0	94.0	95.0	96.0	
P052	Sch. P, Pt. 1F, Sn. 1, Medical Malpractice, Occurrence	88.0	89.0	90.0	91.0	92.0	93.0	94.0	95.0	96.0	
P053	Sch. P, Pt. 1F, Sn. 2, Medical Malpractice, Claims Made	88.0	89.0	90.0	91.0	92.0	93.0	94.0	95.0	96.0	
P054	Sch. P, Pt. 1G, Special Liability	88.0	89.0	90.0	91.0	92.0	93.0	94.0	95.0	96.0	
P055	Sch. P, Pt. 1H, Sn. 1, Other Liability, Occurrence	88.0	89.0	90.0	91.0	92.0	93.0	94.0	95.0	96.0	
P056	Sch. P, Pt. 1H, Sn. 2, Other Liability, Claims Made	88.0	89.0	90.0	91.0	92.0	93.0	94.0	95.0	96.0	
P057	Sch. P, Pt. 1I, Special Property	88.0	89.0	90.0	91.0	92.0	93.0	94.0	95.0	96.0	
P058	Sch. P, Pt. 1J, Auto Physical Damage	88.0	89.0	90.0	91.0	92.0	93.0	94.0	95.0	96.0	
P059	Sch. P, Pt. 1K, Fidelity/Surety										
P060	Sch. P, Pt. 1L, Other (Including Credit, Accident/Health)										
P061	Sch. P, Pt. 1M, International										
P062	Sch. P, Pt. 1N, Reinsurance Property										
P063	Sch. P, Pt. 1O, Reinsurance Liability										
P064	Sch. P, Pt. 1P, Reinsurance Financial Lines										
P065	Sch. P, Pt. 1R, Sn. 1, Products Liability, Occurrence										
P066	Sch. P, Pt. 1R, Sn. 2, Products Liability, Claims Made										
P067	Sch. P, Pt. 1S, Financial Guaranty/Mortgage Guaranty										

Enter Schedule P Pooling Percentages Classic Pooling Company